

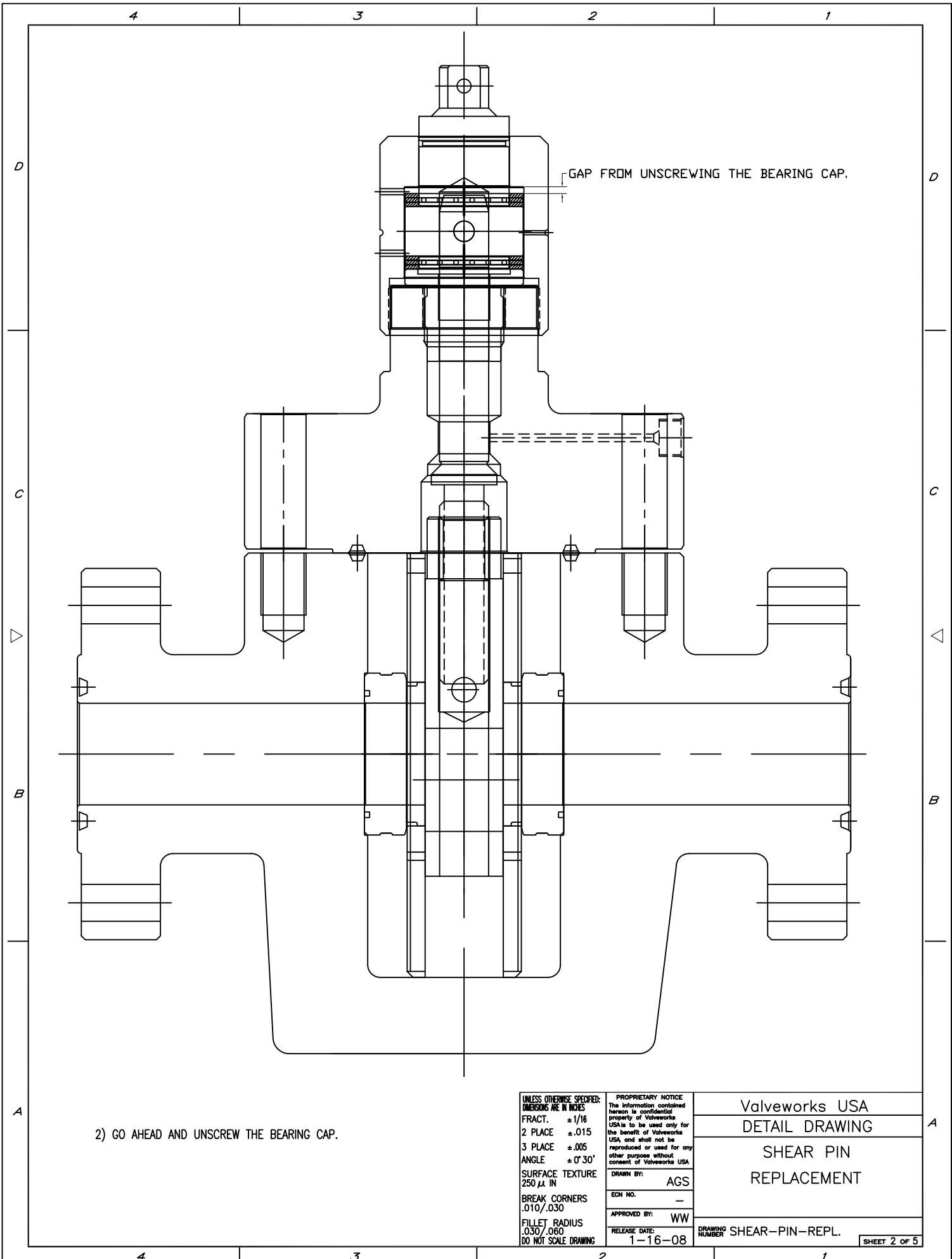
1) WHEN THE SHEAR PIN SHEARS, YOUR GATE WILL MOST LIKELY BE PARTIALLY OPEN.

PROPRIETARY NOTICE
 The information contained hereon is confidential property of Valverworks USA and shall not be reproduced or used for any other purpose without consent of Valverworks USA

DRAWN BY: AGS
 ECN NO. —
 APPROVED BY: WW
 RELEASE DATE: 1-16-08

Valverworks USA
 DETAIL DRAWING
 SHEAR PIN
 REPLACEMENT

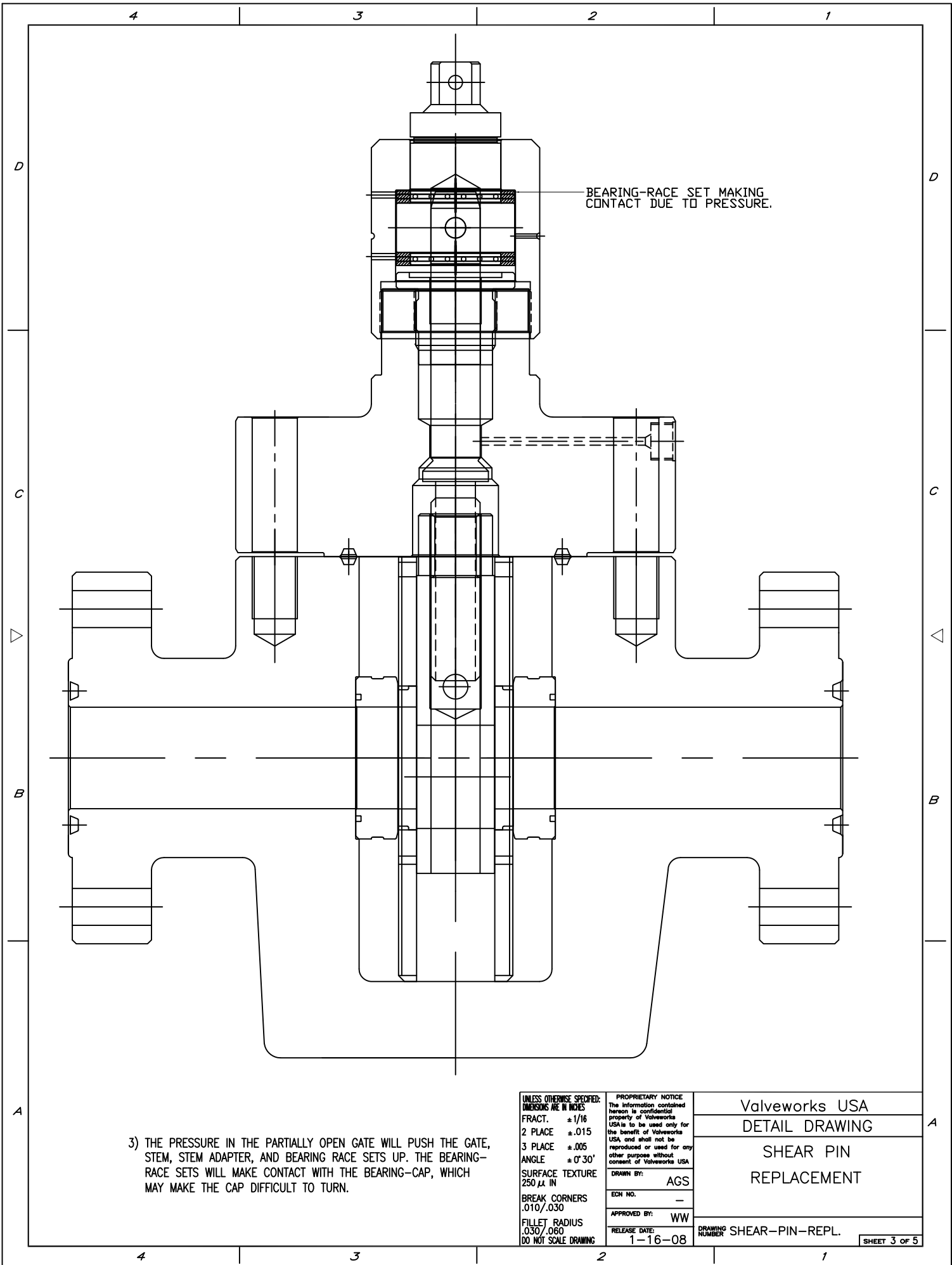
DRAWING NUMBER SHEAR-PIN-REPL.



GAP FROM UNSCREWING THE BEARING CAP.

2) GO AHEAD AND UNSCREW THE BEARING CAP.

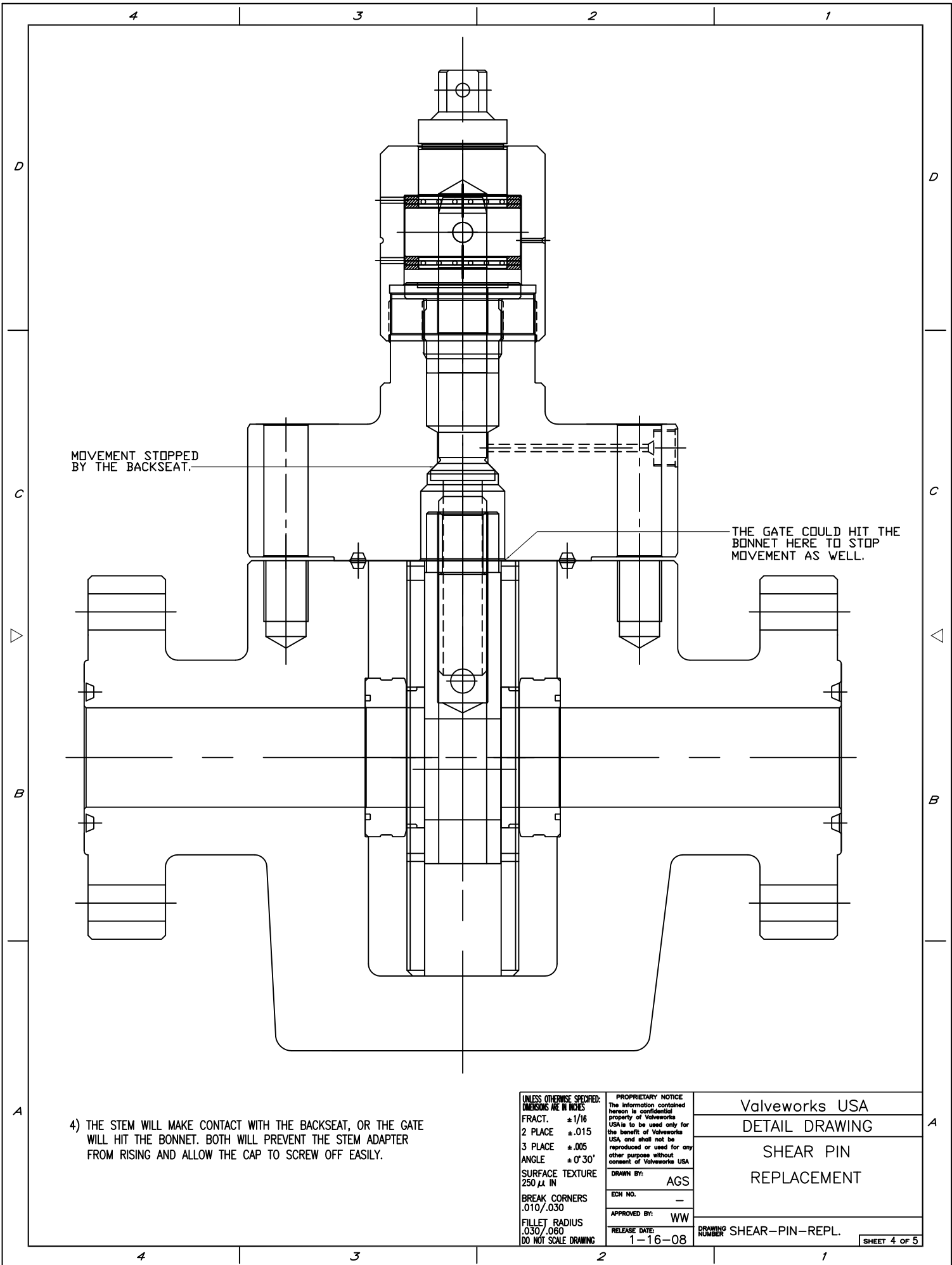
UNLESS OTHERWISE SPECIFIED: DIMENSIONS ARE IN INCHES FRACT. $\pm 1/16$ 2 PLACE $\pm .015$ 3 PLACE $\pm .005$ ANGLE $\pm 0' 30''$ SURFACE TEXTURE 250 μ IN BREAK CORNERS .010/.030 FILLET RADIUS .030/.060 DO NOT SCALE DRAWING	PROPRIETARY NOTICE The information contained hereon is confidential property of Valveworks USA to be used only for the benefit of Valveworks USA and shall not be reproduced or used for any other purpose without consent of Valveworks USA	Valveworks USA DETAIL DRAWING
	DRAWN BY: AGS	SHEAR PIN REPLACEMENT
	ECN NO. —	DRAWING NUMBER SHEAR-PIN-REPL.
	APPROVED BY: WW	SHEET 2 OF 5
RELEASE DATE: 1-16-08		



BEARING-RACE SET MAKING CONTACT DUE TO PRESSURE.

3) THE PRESSURE IN THE PARTIALLY OPEN GATE WILL PUSH THE GATE, STEM, STEM ADAPTER, AND BEARING RACE SETS UP. THE BEARING-RACE SETS WILL MAKE CONTACT WITH THE BEARING-CAP, WHICH MAY MAKE THE CAP DIFFICULT TO TURN.

UNLESS OTHERWISE SPECIFIED: DIMENSIONS ARE IN INCHES FRACT. $\pm 1/16$ 2 PLACE $\pm .015$ 3 PLACE $\pm .005$ ANGLE $\pm 0' 30''$ SURFACE TEXTURE 250 μ IN BREAK CORNERS .010/.030 FILLET RADIUS .030/.060 DO NOT SCALE DRAWING	PROPRIETARY NOTICE The information contained hereon is confidential property of Valveworks USA and shall not be reproduced or used for any other purpose without consent of Valveworks USA	Valveworks USA DETAIL DRAWING
	DRAWN BY: AGS	SHEAR PIN REPLACEMENT
	ECN NO. — APPROVED BY: WW	DRAWING NUMBER SHEAR-PIN-REPL.
	RELEASE DATE: 1-16-08	SHEET 3 OF 5



MOVEMENT STOPPED BY THE BACKSEAT.

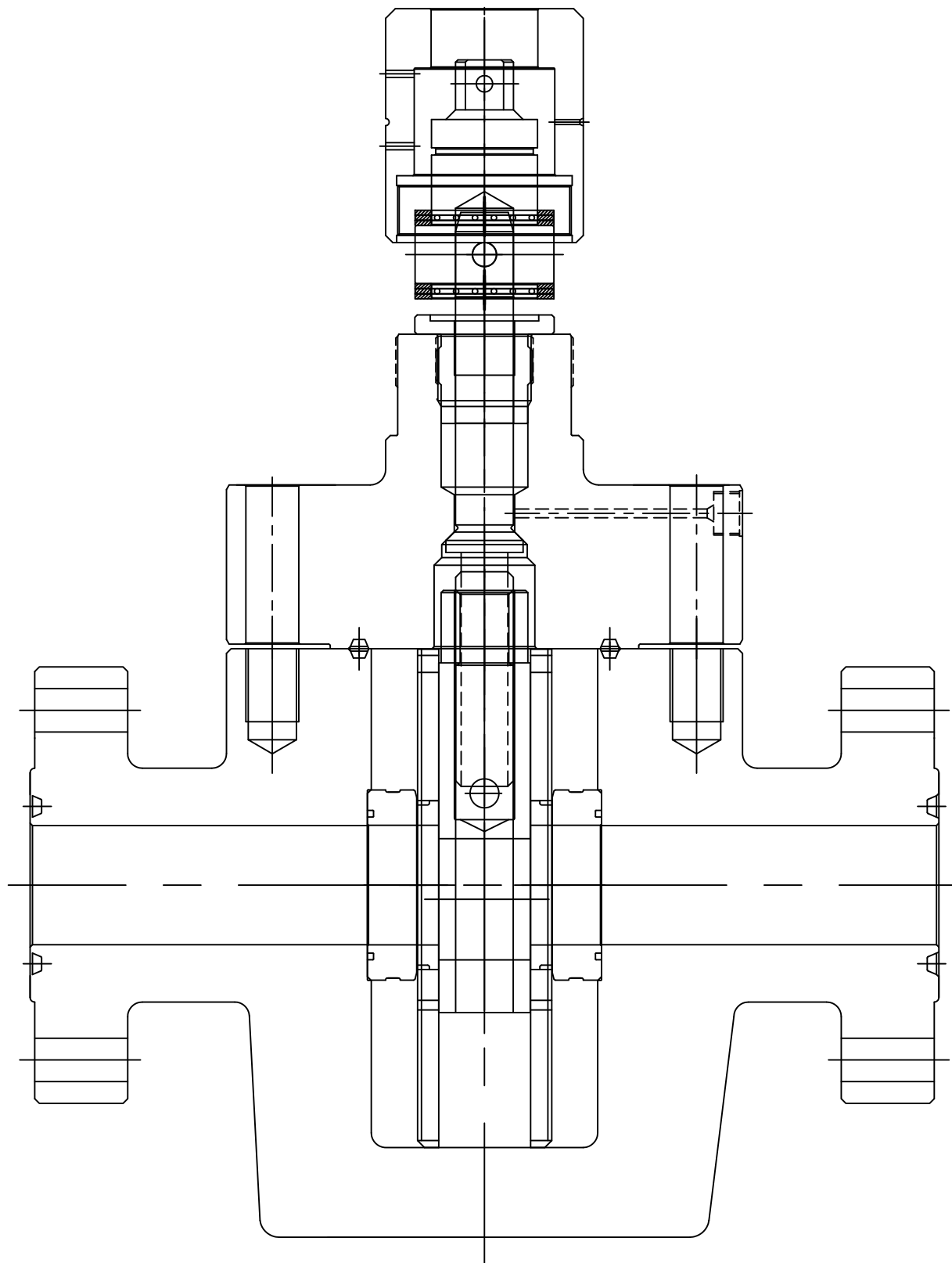
THE GATE COULD HIT THE BONNET HERE TO STOP MOVEMENT AS WELL.

4) THE STEM WILL MAKE CONTACT WITH THE BACKSEAT, OR THE GATE WILL HIT THE BONNET. BOTH WILL PREVENT THE STEM ADAPTER FROM RISING AND ALLOW THE CAP TO SCREW OFF EASILY.

UNLESS OTHERWISE SPECIFIED:
 DIMENSIONS ARE IN INCHES
 FRACT. $\pm 1/16$
 2 PLACE $\pm .015$
 3 PLACE $\pm .005$
 ANGLE $\pm 0' 30''$
 SURFACE TEXTURE
 250 μ IN
 BREAK CORNERS
 .010/.030
 FILLET RADIUS
 .030/.060
 DO NOT SCALE DRAWING

PROPRIETARY NOTICE
 The information contained hereon is confidential property of Valveworks USA and shall not be reproduced or used for any other purpose without consent of Valveworks USA
 DRAWN BY: AGS
 ECN NO. —
 APPROVED BY: WW
 RELEASE DATE: 1-16-08

Valveworks USA
DETAIL DRAWING
SHEAR PIN REPLACEMENT
DRAWING NUMBER SHEAR-PIN-REPL.



5) AT THIS POINT , THE BEARING CAP CAN SAFELY BE REMOVED.

IF YOU REQUIRE FURTHER ASSISTANCE, CONTACT:

VALVEWORKS U.S.A.
 1841 BARTON DRIVE
 SHREVEPORT, LA. 71107
 (888)425-0266

UNLESS OTHERWISE SPECIFIED:
 DIMENSIONS ARE IN INCHES
 FRACT. $\pm 1/16$
 2 PLACE $\pm .015$
 3 PLACE $\pm .005$
 ANGLE $\pm 0' 30''$
 SURFACE TEXTURE
 250 μ IN
 BREAK CORNERS
 .010/.030
 FILLET RADIUS
 .030/.060
 DO NOT SCALE DRAWING

PROPRIETARY NOTICE
 The information contained
 hereon is confidential
 property of Valveworks
 USA to be used only for
 the benefit of Valveworks
 USA and shall not be
 reproduced or used for any
 other purpose without
 consent of Valveworks USA
 DRAWN BY: AGS
 ECN NO. —
 APPROVED BY: WW
 RELEASE DATE:
 1-16-08

Valveworks USA
DETAIL DRAWING
SHEAR PIN REPLACEMENT
DRAWING NUMBER SHEAR-PIN-REPL.